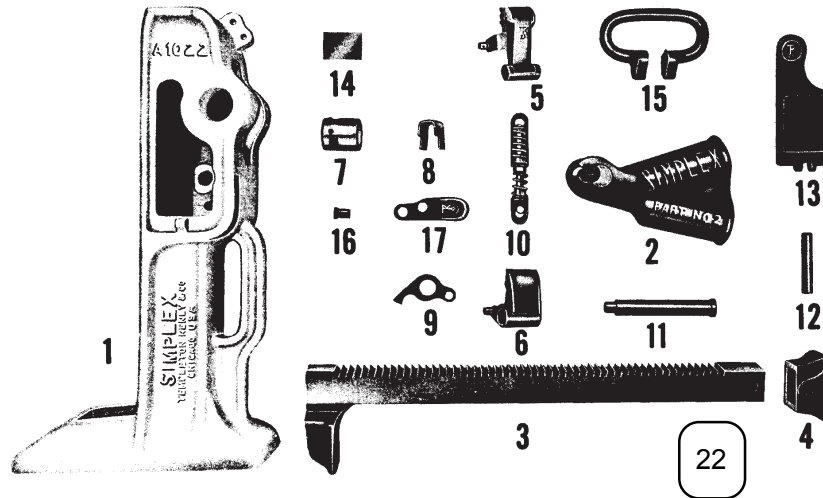




www.simplexmechanicals.com

RJA1022, RJ22B
RATCHET JACK
REPAIR PARTS SHEET

Part Sheet # 54051
Revision - C
Date: 2_11



ITEM NO.	DESCRIPTION	PART NO.	
		RJA1022	RJ22B
1	Housing	N/A	N/A
2	Socket	90586	90586
3	Rack Bar	90968	90968
4	Cap	•	•
5	Lifting Pawl	90588	90588
6	Retaining Pawl	90589	90589
7	Trunnion Bearing (2 required)	+	+
8	Key (2 required)	***, +	***, +
9	Spring Link Lever	90275	90275
10	Spring Link Complete	+	+
11	Retaining Pawl Pin Assembly	***	***
12	Cap Pin	***, •	***, •
13	Side Plate	90965U	90965U
14	Wearing Plate	+	+
15	Handle	41192	41192
16	Rev. Lever Exp. Rivet.	***	***
17	Reversing Lever	90970	90970
18	Cotter Pin (3 required)	***, +	***, +
19	Side Plate Cotter Pin	***	***
20	Handle Rivet (2 required)	***	***
22	Capacity & Instruction Label	+	+
***	HARDWARE KIT COMPONENTS	RKA102201	RK22B01
+	REPAIR KIT	40562	40562
•	CAP KIT COMPONENTS	RKA1022B02	RKA1022B02

NOTE: HOUSING ARE NOT AVAILABLE AS SERVICABLE ITEMS.

WARRANTY STATEMENT

Simplex products are warranted to be free of defects in materials and workmanship under normal use for as long as they are owned by the original purchaser, subject to the exclusions and limitations listed. This warranty does not cover ordinary normal wear & tear, abuse, overloading, alterations, (including repairs or attempted repairs by parties other than SIMPLEX or its Authorized Service Centers), improper fluid, or use in a manner for which they are not intended or use which is contrary to instructions for the products. If the customer believes a product is defective, the product must be delivered, or shipped freight prepaid, to the nearest SIMPLEX Authorized Service Center.