



1.5, 2, 2.5 SCREW JACK SERIES OPERATIONAL / REPAIR PART SHEET

INSTRUCTIONAL MANUAL # 54209
PART SHEET # 54100
REV. A
07/04



OPERATING & MAINTENANCE INSTRUCTIONS FOR SIMPLEX FOUR WAY HEAD SCREW JACKS

IMPORTANT: PRIOR TO USING JACKS, READ AND UNDERSTAND JACK OPERATING INSTRUCTIONS DETAILED BELOW. ALSO READ AND UNDERSTAND ALL SAFE OPERATING PROCEDURES AND SAFETY PRECAUTIONS OUTLINED ON THE REVERSE SIDE. FOLLOW THESE INSTRUCTIONS AND PROCEDURES AS APPLICABLE.

IN ADDITION, THE OPERATOR SHOULD ADHERE TO THE GENERAL SAFETY PRINCIPLES AND ACCIDENT PREVENTATIVE MEASURES AS OUTLINED BY THE EQUIPMENT OWNER OR OTHER PREVAILING AUTHORITY.

REFERENCE DOCUMENTS:

1. OSHA ACCIDENT PREVENTION MANUAL.FOR INDUSTRIAL OPERATIONS & JACKS.
2. OSHA GENERAL INDUSTRY STANDARDS & JACKS
3. ANSI B30.1 SAFETY STANDARDS FOR JACKS.

JACK OPERATING INSTRUCTIONS:

TO OPERATE, INSERT THE LEVER BAR INTO THE SELECTED HOLE OF THE JACKS 4-WAY HEAD. MAKE SURE THAT THE LEVER BAR ENGAGES FULL LENGTH OF THE HOLE. GRIP THE LEVER BAR FIRMLY, AND EXERTING A CONTROLLED FORCE, TURN SCREW TO EXTEND OR RETRACT AS ILLUSTRATED IN FIG. 1 AND FIG. 2 BELOW, MOVING THE BAR TO THE ADJACENT HOLE BETWEEN ROTATIONS OF THE SCREW.

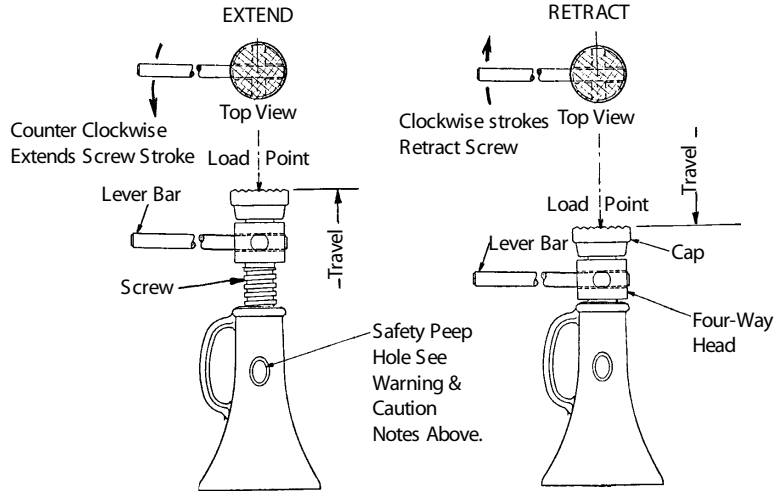
THE CAPACITY AND MODEL NUMBER IS PERMANENTLY MARKED ON THE SIDE OF EACH JACK HOUSING AND DEPICTS THE MAXIMUM LOAD TO BE SUSTAINED BY EACH MODEL. THE MAXIMUM SCREW TRAVEL IS ALSO LISTED IN THE TABLE BELOW BY JACK MODEL AND CAPACITY. DO NOT EXCEED JACK CAPACITY OR TRAVEL

CAPACITY: THE JACK CAPACITY IS THE RATED LOAD THAT THE JACK IS DESIGNED TO SUSTAIN UNDER CONTROLLED CONDITIONS.

THE RATED LOAD IS THE MAXIMUM GRAVITY LOAD TO BE APPLIED AT THE LOAD POINT AXIAL TO THE JACK SCREW ONLY.

CONTROLLED CONDITIONS ARE CONDITIONS OF APPLICATION IN AN AMBIENT TEMPERATURE RANGE OF -20¼ F TO 140¼ F WHERE THE JACK IS EVENLY SUPPORTED ON A SOLID FOUNDATION, PROTECTED AGAINST WIND, SIDE LOADS AND OTHER EXTERNAL FORCES, SUCH AS SHOCK LOADS OR VIBRATIONS.

CAUTION: A SAFETY PEEPHOLE IS PROVIDED ON THE SIDE OF THE JACK HOUSING TO OBSERVE THE SCREW POSITION DURING OPERATIN. DO NOT EXTEND THE SCREW END BEYOND THE TOP OF THIS HOLE.



JACK SUSTAINING CAPACITY/MAXIMUM RISE (SEE NOTES)								
MODEL NO.	CAPACITY TONS	MAXIMUM TRAVEL	MODEL NO.	CAPACITY TONS	MAXIMUM TRAVEL	MODEL NO.	CAPACITY TONS	MAXIMUM TRAVEL
1 1/2 X 4	12	2	2 X 6	20	3	2 1/2 X 8	24	4 1/4
1 1/2 X 6	12	3 3/4	2 X 8	20	5	2 1/2 X 12	24	8 1/4
1 1/2 X 8	12	5 3/4	2 X 10	20	7	2 1/2 X 14	24	10 1/4
1 1/2 X 10	12	7 3/4	2 X 12	20	9	2 1/2 X 16	24	12 1/4
1 1/2 X 12	12	9 3/4	2 X 14	20	11	2 1/2 X 18	24	14 1/4
LEVER BAR # 10621 13/16X 24" HANDLE EFFORT: APPROX. 16 LBS. PER TON			LEVER BAR # 10650 7/8 X 36" HANDLE EFFORT: APPROX 15 LBS. PER TON			LEVER BAR # 10655 1 1/8 X 42" HANDLE EFFORT: APROX 15 LBS. PER TON		
SIMPLEX LEVER BAR REFERENCE DATA								

SAFE OPERATING PROCEDURES & SAFETY PRECAUTIONS:

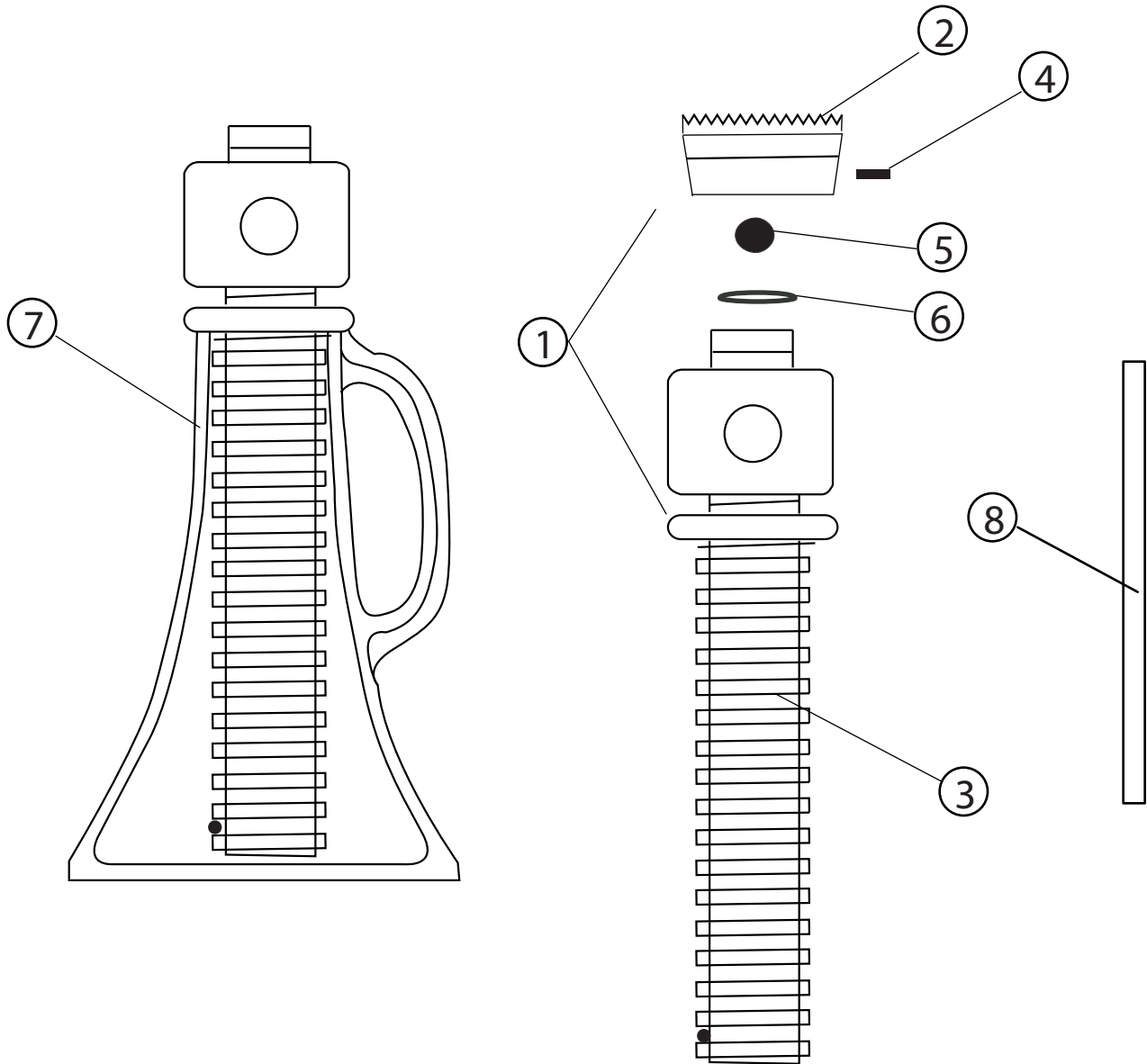
SCREW JACKS (FOUR WAY HEAD)

1. PRIOR TO USE, THE OPERATOR SHOULD BE INSTRUCTED BY A QUALIFIED PERSON IN THE SAFE AND PROPER USE OF THE JACK FOR ANY SPECIFIC APPLICATION.
NOTICE: TEMPLETON, KENLY & CO. MAKES NO WARRANTY THAT THE JACKS COVERED IN THIS DOCUMENT ARE SUITABLE FOR ANY GENERAL OR PARTICULAR USE AND THE USER ASSUMES ALL LIABILITY ARISING THEREFROM.
2. IN ADDITION, TO COMPLIANCE WITH THE STANDARDS SET FORTH BY ANSI B30.1 CHAPTER 1-2, AND 1-3, ALL JACKS SHOULD BE EXAMINED BY A QUALIFIED PERSON PRIOR TO EACH USE FOR DEFECTS, DAMAGE, PROPER LUBRICATION AND WEAR. THE JACK SHOULD BE OPERATED PRIOR TO APPLICATION OF LOAD TO VERIFY THAT IT IS IN GOOD WORKING CONDITION. NEVER USE A JACK THAT IS DAMAGED, IMPROPERLY LUBRICATED, OR MALFUNCTIONING. JACKS THAT FAIL INSPECTION MUST BE REMOVED FROM SERVICE UNTIL REPAIRED BY AN AUTHORIZED AGENCY.
3. CONSULT OPERATING INSTRUCTIONS AND TABLE ON THE REVERSE SIDE AND VERIFY THAT THE JACK CAPACITY AND TRAVEL IS SUITABLE FOR THE LOAD. IF UNABLE TO CALCULATE THE LOAD EXACTLY, SELECT A JACK OF GREATER CAPACITY THAN THE ESTIMATED LOAD ALLOWING A LARGE MARGIN OF SAFETY.
4. PLACE THE JACK ON A FIRM FOUNDATION MAKING SURE THAT THE JACK IS EVENLY AND RIGIDLY SUPPORTED AT THE BASE AND THAT THE JACK IS PROPERLY ALIGNED PERPENDICULAR TO THE LOAD. MAKE SURE THAT THE JACK IS PROPERLY SUPPORTED AT THE LIFTING POINT IN A MANNER THAT THE JACK CANNOT SLIP OR THE LOAD CANNOT SHIFT.
5. USE THE SIMPLEX LEVER BAR RECOMMENDED FOR THE SPECIFIC JACK MODEL. THE LEVER BAR TO BE USED SHOULD NOT EXCEED THE LENGTH SPECIFIED IN THE TABLE ON THE REVERSE SIDE. LEVER BAR EXTENDERS MUST NOT BE USED.
6. THE OPERATOR SHOULD MAKE SURE THAT THE AREA IS CLEAR OF PERSONNEL AND OBJECTS OBSTRUCTING WORKING SPACE REQUIRED TO SAFELY ACTIVATE THE JACK LEVER BAR IN BOTH THE COUNTER CLOCKWISE AND CLOCKWISE DIRECTION.
7. THE OPERATORS HEAD AND BODY SHOULD BE POSITIONED TO ONE SIDE OF THE LEVER BAR IN A MANNER TO PREVENT SERIOUS INJURY SHOULD THE LEVER BAR SUDDENLY SWING UNRESTRICTED.
8. PRIOR TO OPERATING THE JACK TO MOVE THE LOAD, READ THE OPERATING INSTRUCTIONS ON THE REVERSE SIDE. FOLLOW THESE INSTRUCTIONS. MOVE THE LOAD EVENLY AND FOLLOW THE LOAD WITH BLOCKING DURING OPERATION TO PREVENT FALLING OR SHIFTING OF THE LOAD IN THE EVENT OF JACK FAILURE OR ACCIDENTAL DISLOCATION OF JACK. A RAISED LOAD SHOULD NEVER BE ALLOWED TO REMAIN SUPPORTED BY JACKS ONLY. IMMEDIATELY AFTER LIFTING IS COMPLETE, SUBSTANTIAL LOAD SUPPORTS SHOULD BE INSTALLED.
9. **CAUTION:** DO NOT LIFT HUMAN CARGO. DO NOT ALLOW PERSONNEL ON OR UNDER THE LOAD UNTIL LIFTING IS COMPLETE AND THE LOAD IS SECURE WITH PROPER LOAD SUPPORTS INSTALLED IN ACCORDANCE WITH OSHA SAFETY AND HEALTH STANDARDS AND THAT SUPPORTS HAVE BEEN INSPECTED AND APPROVED BY A SAFETY ENGINEER OR QUALIFIED PERSON OF AUTHORITY.
10. DO NOT EXCEED THE JACK TRAVEL SHOWN IN THE TABLE ON THE REVERSE SIDE. READ WARNING AND CAUTION NOTES AND OBSERVE THE SCREW DURING OPERATION TO MAKE SURE THAT THE BOTTOM OF THE SCREW IS NEVER EXTENDED BEYOND THE TOP OF THE SAFETY PEEPHOLE. EXCEEDING MAXIMUM TRAVEL COULD RESULT IN LOSS OF STABILITY AND CAUSE THE LOAD TO TOPPLE. DO NOT CONTINUE TO APPLY FORCE TO THE LEVER BAR AFTER THE LOAD MAKES CONTACT WITH IMMOVABLE OBJECTS, OR WHEN MAXIMUM TRAVEL IS REACHED.
11. NEVER KICK, STRIKE WITH A HAMMER OR FORCE THE LEVER BAR IN A ROCKING MOTION. SUCH ACTIONS CREATE A PERSONAL INJURY HAZARD. THE JACK COULD BECOME DISLODGED CAUSING THE LOAD TO DROP.
12. AS A SAFETY PRECAUTION, REMOVE THE LEVER BAR FROM THE HEAD AFTER LIFTING IS COMPLETE AND WHEN JACKS ARE NOT IN OPERATION. ACCIDENTALLY STRIKING AN UNATTENDED LEVER BAR PROJECTING FROM THE JACK COULD DISLOCATE OR DISLODGE THE JACK CAUSING THE LOAD TO DROP. UNATTENDED LEVER BARS COULD PRESENT A TRIP HAZARD.
13. **IMPORTANT** PRIOR TO OPERATING THE JACK TO LOWER THE LOAD, READ OPERATING INSTRUCTIONS ON THE REVERSE SIDE. OPERATOR SHOULD FOLLOW PROCEDURE (7) ABOVE AND TAKE PRECAUTIONS THAT ALL PERSONNEL AND PARTS OF THE HUMAN BODY ARE CLEAR OF THE LOAD BEFORE LOWERING.

MAINTENANCE & LUBRICATION INSTRUCTIONS:

1. COMPLY WITH PROCEDURE #2 ABOVE AND THE REQUIREMENTS OF ANSI B30.1 CHAPTER 1-2 AS DETERMINED FROM USE, EXPERIENCE OR AS SPECIFIED BY A QUALIFIED PERSON OF AUTHORITY.
2. KEEP JACK CLEAN, FREE OF GRIT, AND IN GOOD WORKING CONDITION.
3. LUBRICATE SCREW THREADS AND CAP ASSEMBLY WITH #2 GRAPHITE GREASE. AVOID LUBRICATION OF CAP LOAD SURFACE.

REPAIR PART SHEET



		MODEL AND PRODUCT ITEM NUMBERS									
		03060	03090	03120	03165	03195	03210	03240	03255	03300	
ITEM	DESCRIPTION	1.5X6	1.5X8	1.5X12	2X8	2X10	2X12	2.5X8	2.5X12	2.5X18	QTY
1	CAP & SCREW ASSEMBLY	03568	03570	03574	03582	03584	03586	03600	03602	03608	1
2	CAP	90007	90007	90007	90048	90048	90048	90070	90070	90070	1
3	SCREW	90016	90019	90025	90036	90039	90043	90056	90059	90068	1
4	SPIROL PIN	93821	93821	93821	93822	93822	93822	93825	93825	93825	3
5	BALL BEARING	90008	90008	90008	90049	90049	90049	90071	90071	90071	1
6	THRUST WASHER	90009	90009	90009	90050	90050	90050	90072	90072	90072	1
7	HOUSING	90014	90017	90024	90034	90038	90041	90054	90058	90067	1
		LEVER BAR ACCESSORY									
8	ROUND LEVER BAR	10621	10621	10621	10650	10650	10650	10655	10655	10655	1



SIMPLEX products are warranted to be free of defects in materials and workmanship under normal use for as long as the original purchaser owns them, subject to the guidelines and limitations listed. This warranty does not cover: normal wear & tear, cosmetic items, abuse, overloading, alterations, improper fluid, or use in a manner for which they are not intended. If the customer believes a product is defective, the product must be delivered, or shipped freight prepaid, to the nearest SIMPLEX Authorized Service Center for evaluation and repair.

2525 GARDNER ROAD * BROADVIEW * ILLINOIS * 60155 * PHONE (708) 865-1500 * FAX (708) 865-0894