

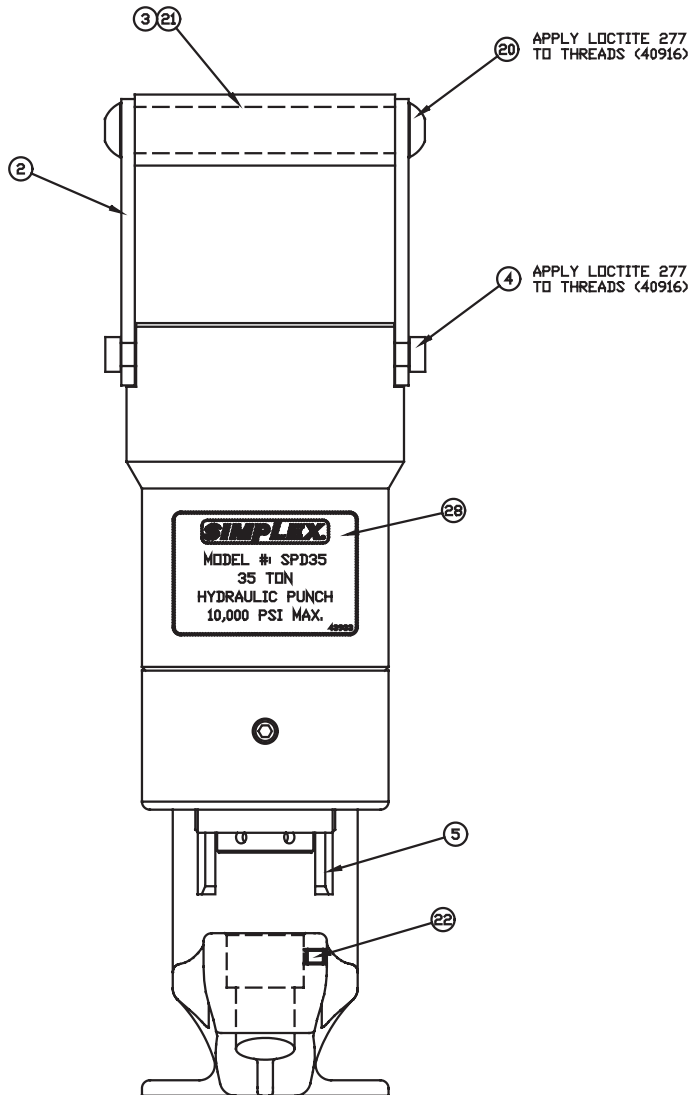


Revised 02-08

# 35 TON D/A PUNCH

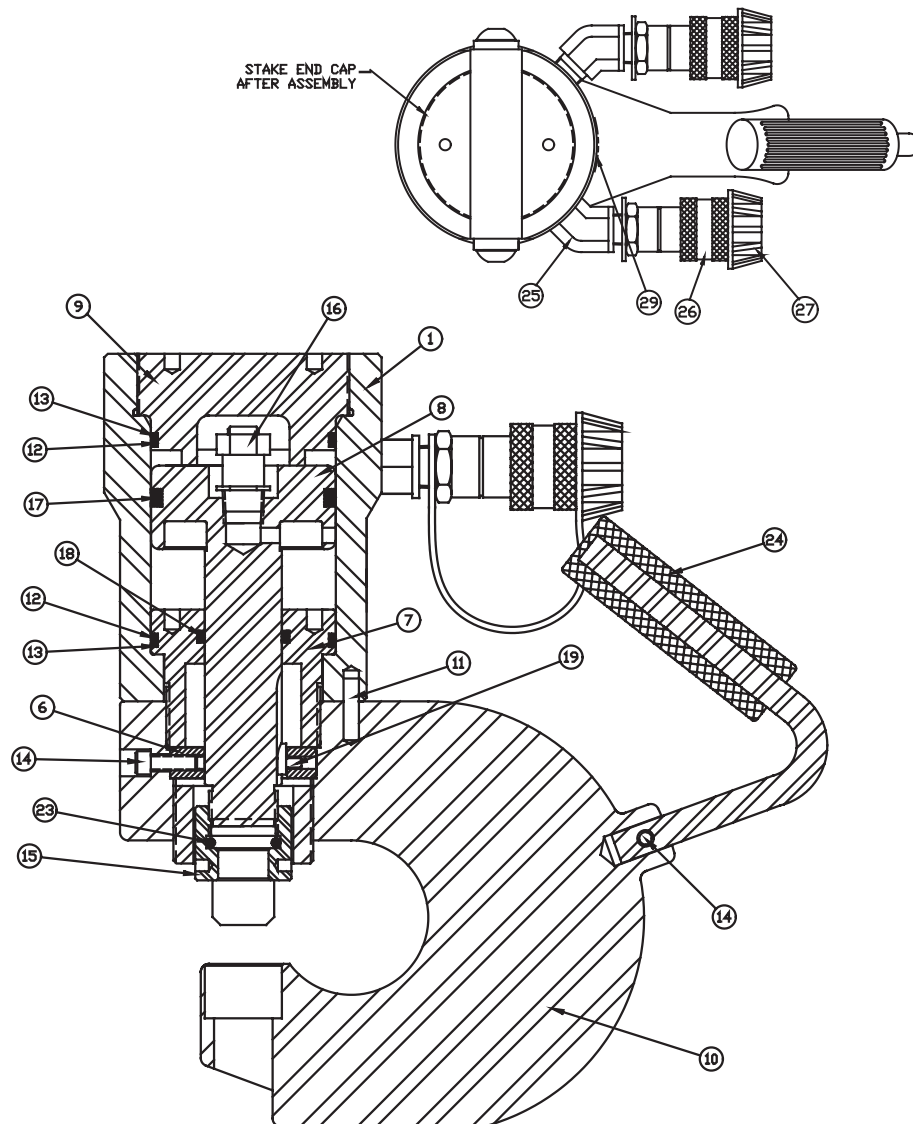
## SPD 35

### REPAIR PARTS SHEET



**SIMPLEX**  
 MODEL # SPD35  
 35 TON  
 HYDRAULIC PUNCH  
 10,000 PSI MAX.

APPLY LOCTITE 277 TO THREADS (40916)



# PARTS SHEET FOR SPD35

INSTRUCTIONS-HYDRAULIC PUNCH- 35 TON D/A

Guidelines listed below will help ensure safe operation and aid in prolonging tool life.

ITEM NO .	DESCRIPTION	QTY.	PART NO.
			SPD35
1	Punch Cylinder Housing	1	43042
2	Punsh Handle Link	2	43043
3	Punch Handle	1	43044
4	Handle Link Screw	2	43045
5	Punch Stripper D/A	1	43046
6	Bearing Ring	1	43047
7	Punch Ret. Nut D/A	1	43048
8	Punch Piston Rod D/A	1	43049
9	Punch Cylinder End Cap. D/A	1	43050
10	Punch Frame D/A	1	43051
11	Dowel Pin 1/4 X 1"	1	43052
12	O-Ring	2	*
13	Back-Up	2	5608232
14	SHCS 1/4 - 20 X 3/4 LG	2	93582
15	Punch Holder	1	41999
16	Relief Valve Assembly	1	84027
17	Piston T-Seal	1	*
18	Rod T-Seal	1	*
19	Punch Key	1	43891
20	BHSCS 5/16 - 18 X 1/2"	2	43931
21	Handle Grip	1	43932
22	Set Screw 1/4 - 20 X 1/4	1	93622
23	O-Ring	1	*
24	Punch Handle Asm.	1	42038
25	45 Elbow 3/8 NPTF	1	18110
26	Ram Half Coupler	2	18211
	*Packing Kit		55158

1. Do not exceed maximum punch limits shown on the tool decal. The tool is compatible with pumps designed for 4,000 psi capacity up to 10,000 psi.
2. Keep the punch and the die sets as clean as possible. Lubrication is not required.
3. Always match the punch and die correctly. Install the dies with the larger opening facing down to prevent clogging the die during operation.
4. Protect the punch and die sets. Return them to the storage case after using.
5. SIMPLEX hydraulic oil is recommended for the punch and pump system.
6. Cracked, chipped or worn punches and dies should be replaced immediately. Refer to the repair parts sheet when ordering replacement parts.
7. Punch and die replacement:
  - a. Screw punch stripper item #5, counter-clockwise tightening the stripper upwards to be able to see the hole on the punch holder.
  - b. Remove the punch from the upper jaw by using the pin tool is placed in hole in the punch holder Item #15, then used as a lever to loosen the nut. Remove the punch holder and extract the punch. Do not remove the o-ring from the punch holder.
  - c. Loosen the set screw on the main frame lower jaw. Item # 14 (Tools supplied with each punch)
  - d. Remove the die from the lower jaw. Install a new die with the larger opening facing down and the "flat" toward the set screw. Tighten the set screw.
  - e. Insert a punch in the punch holder, long stem facing down. Install the punch holder and tighten, using the tool.
  - f. Before using the punch, adjust the punch stripper to the hight of the material.
  - g. Before using the punch, check to make sure the set screw and punch holder are tightened securely.

**CAUTION :**

- \* Always wear safety glasses and other prescribed safety items when operating the punch.
- \* Do not operate the punch using worn or damaged punch and die set.
- \* Avoid using hydraulic hose with sharp bend or kinks. Never apply pressure to sharply bent or kinked hose.

**WARNING :**

- \* Keep hands and tools away from the punch throat area during operation.
- \* Do not use the punch for brittle plastic, glass or wood materials; shattering materials could endanger the operator.
- \* Do not punch holes smaller than the thickness of plate.

**Simplex Division of Templeton, Kenly & Co., Inc.**

2525 Gardner Rd. Broadview, IL 60155 Phone: (708) 865-1500 Fax: (708) 865-0894 www.tksimplex.com